



THE BERSERKER

To unlock their true potential, cooling components must work, not individually, but together as an ecosystem. The right case can do that for you.

HAF 700 unveils a new era of thermal efficiency through unique features designed to transcend the standards of contemporary cooling solutions. Rediscover PC DIY: a form of entertainment, a polished skillset, an exquisite art form, and a way of living.

HAF 700 White

In Spirit of Cooler Master's HAF Legacy -

Debuted in 2008, HAF has long been synonymous with exquisite performance and DIY freedom. HAF 700 embodies the spirit and soul of HAF's classic, performance oriented design, while boasting mechanical detail and aesthetics.

The HAF Standard In Cooling -

When it comes to HAF 700, expect only the best in product quality and thermal performance. Crafted to maintain and minimal noise levels at stock configuration, HAF 700 breaks industrial limits when it comes to hardware performance. From fifteen 120mm fans, to dual 360 radiators and 480mm radiators, HAF 700 effortlessly gives you an edge over the rest.

A Decade of HAF Design, Revolutionized -

HAF 700 utilizes an extensive tool-less system with the goal of making the build process as easy and streamlined as possible for both experienced and casual builders alike. Featuring innovative breakthroughs such as toolless GPU and PSU installation, this unique chassis provides an experience found nowhere else on the market

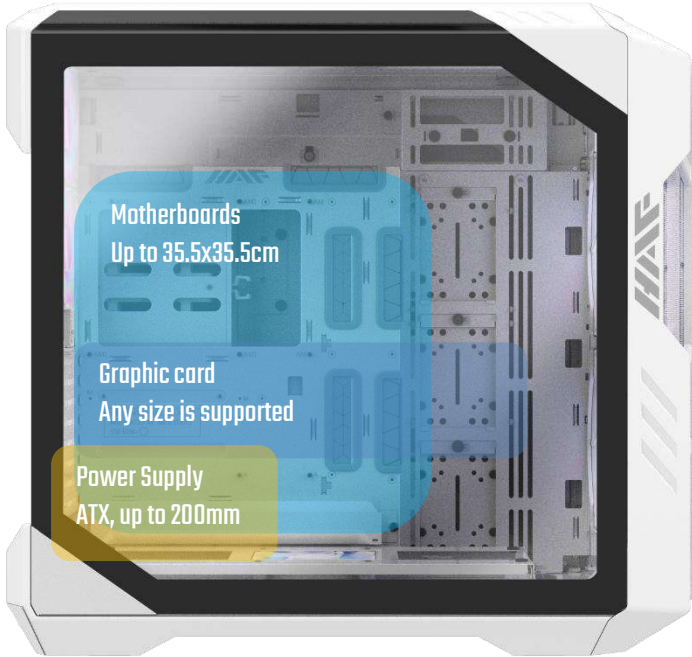
ARGB Gen 2: Full Range Customization Unlocked -

Pre-installed with ARGB Gen 2 devices from top to bottom, HAF 700 offers users unprecedented levels of freedom in lighting customization. Unlike Gen 1 ARGB devices which forces lighting to be controlled together in sets, ARGB Gen 2 allows each LED to be independently controlled. Backwards compatible and fully supporting third party devices, ARGB Gen 2 allows vastly diverse setups to be brought to life in a few simple clicks.



FEATURE HIGHLIGHTS

HARDWARE SUPPORT & CONNECTIVITY



The HAF700 truly has no limits when it comes to hardware support.

Drawing inspiration from our ever-growing community of enthusiasts, the HAF 700 is capable of housing up to **EATX motherboards** such as the Dominus Extreme, as well as **any sized graphics cards** in both horizontal and vertical orientations.

Users can enjoy direct side intake and **support for power supplies of up to 200mm**, and well as **unparalleled number of options for installing disks, pumps and radiators**.

4poles Headset Jack(Audio+Mic)
+ Additional Dedicated Mic Jack



4x USB3.2 Gen1 Type-A

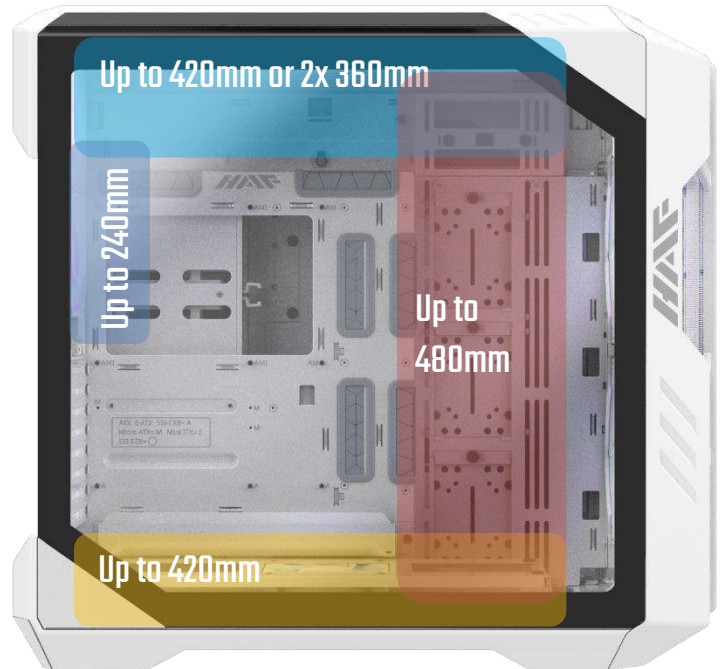
1x USB3.2 Gen2 Type-C

FEATURE HIGHLIGHTS

UNMOUNTED COOLING OPTIONS

Mammoth Radiator Support

HAF 700 provides users unparalleled options for out-of-the-box cooling support. Users may pick and choose between installing a selection of radiator sizes in various mounting locations: 480mm (side panel), 360mm (front panel, bottom panel, or up to dual radiators on the top panel), or 240mm (rear panel).



Rotatable Radiator Bracket

HAF 700 boasts two rotatable fan/radiator brackets. These brackets are fully modular and can be installed in multiple positions for complex setups. Users may choose one of the two to rotate, showcasing their radiator at unique angles.

Tool-less Removable Top Panel

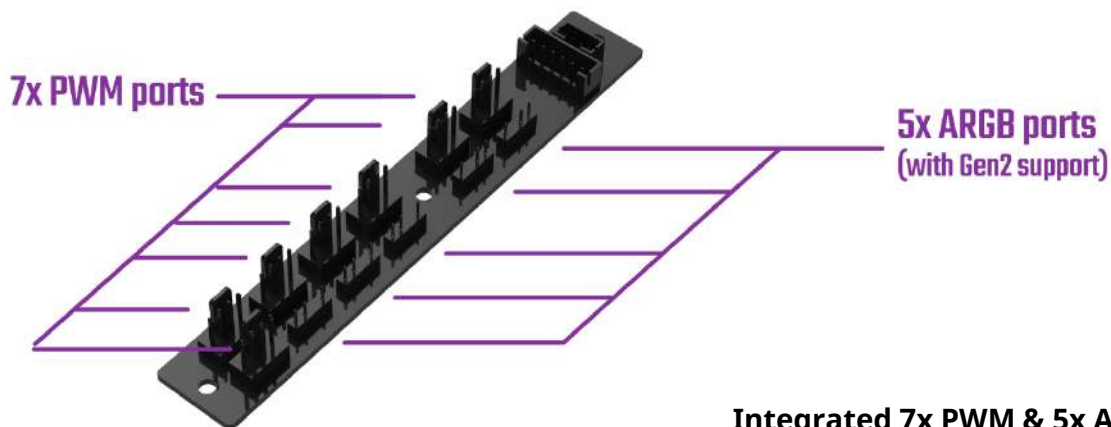
Exclusive tool-less removable top panel design allows for easy removal of top and side panels. Cooling components such as fans and radiators can be effortlessly installed, accessed and maintained.

FEATURE HIGHLIGHTS

AIRFLOW PERFORMANCE DETAILS

200mm SickleFlow White ARGB PWM Performance Edition

HAF 700 comes with dual 200mm Sickleflow PWM fans tailored to maximize the performance potential of installed components. Fan curves can be customized to keep temperatures and noise levels low, even in extreme overclocking scenarios.



Integrated 7x PWM & 5x ARGB Hub

This chassis features a fully integrated PWM/ARGB Hub that allows for effortless cable management and control over multiple fans and ARGB devices. The Hub is fully compatible with ARGB Gen2 devices, allowing users to customize fan speeds and ARGB effects in depth according to their system needs or personal preference.

FEATURE HIGHLIGHTS

UNIQUE BODY FEATURES

Unrestricted Front Panel Intake

HAF 700 sports a fully meshed front panel, specifically designed to allow for maximum air intake. With the front panel structurally reinforced to prevent resonance caused by fan vibrations, systems can run smoothly at minimal noise levels.

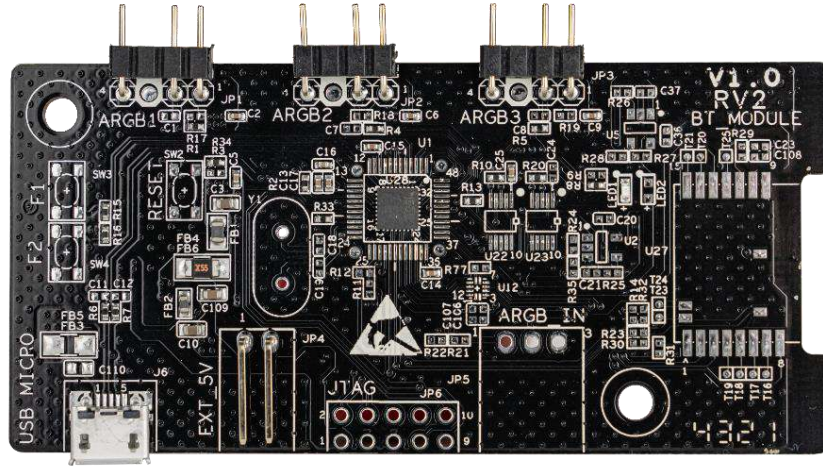


Multi Chamber Layout

The body of the HAF 700 is organized into multiple sectors, including a cooling chamber, cable management gutter, dedicated swiveling hard drive cage, as well as a power supply slot, allowing for complex yet tidy builds. Furthermore, by segregating non heat sensitive components, heat dissipation can be optimized and targeted towards heat sensitive components at an overall higher efficiency.

FEATURE HIGHLIGHTS

ULTIMATE CUSTOMIZATION FREEDOM



ARGB Gen2 Ready, Controller Included

ARGB Gen2 devices allow software to automatically detect the arrangement and number of LEDs in each ARGB device. Thus, ARGB Gen 2 devices make full range customization possible as each LED can be independently controlled.

Each device will be independently recognized, regardless of the number of devices connected to a single ARGB port, allowing users to create complex lighting setups with minimal wiring and configuration.

Unlike some ARGB Gen1 devices which sacrifice hardware compatibility for customization flexibility, Cooler Master's ARGB Gen2 devices remain fully compatible with third party devices, granting users the freedom to mix and match multiple devices from different ecosystems.



MasterPlus+ Implementation

HAF 700 comes equipped with a software suite in MasterPlus+, facilitating user-friendly management and customization of the integrated ARGB Gen2 controller (A1).

The A1 controller plugin will automatically be activated on MasterPlus+ once the controller has been connected to the system.

FEATURE HIGHLIGHTS

TOOL-LESS INSTALLATION



Tool-less Vertical GPU Mounting (Patent Pending)

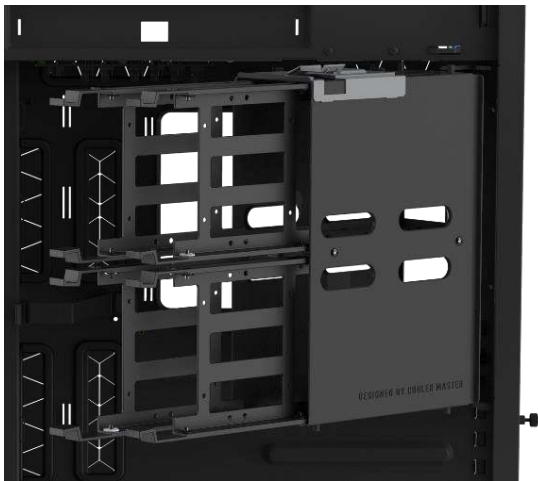
The back panel implements a patent pending clamping mechanism that allows users to install, remove, and upgrade graphics cards without the need to use any tools.

This custom design locks the GPU firmly in place in case of transportation. Safety pins prevent the GPU from falling and being damaged when the clamp is opened.



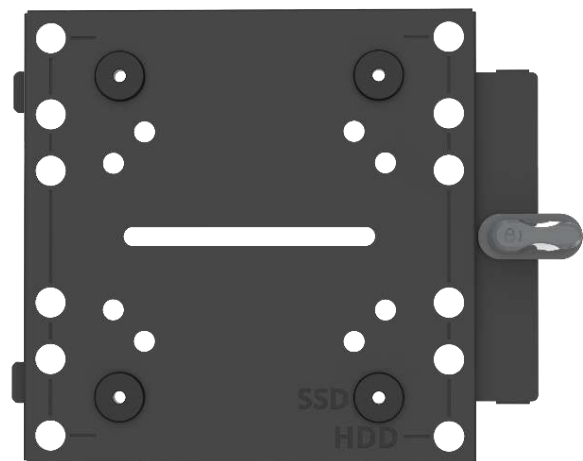
Tool-less PSU Mount

HAF 700 implements a never-seen-before way of securing the power supply without the need to fiddle with tools. To install, simply slide the power supply in place and secure it with the two included thumbscrews on the rear end of the case.



Tool-less HDD Cage

The rear chambers includes a tool-less, swiveling drive cage that allows users to quickly access, maintain and swap hard drives with ease.



Tool-less Multifunction Bracket (HDDs / SSDs / Pumps / Reservoirs)

HAF700 features versatile brackets that can be used to mount an SSD, HDD, or a pump/reservoir for liquid cooling.

Brackets can be placed in multiple positions inside the case, including the cooling brackets and the open side of the motherboard tray.

SPECIFICATIONS

Product Name		HAF 700 White
Product Number		H700-WGNN-S00
Exterior Color		White
Materials	Exterior	Mesh, Steel, Plastic
	Left Side Panel	Tempered Glass, Steel
Dimensions (L x W x H)	Body size	556 x 279 x 540 mm
	incl. Protrusions	666 x 291 x 626 mm
Motherboard Support		Mini-ITX, Micro-ATX, ATX, E-ATX, SSI-CEB, SSI-EEB
Expansion Slots		8
Drive Bays	5.25" ODD	N/A
	3.5" / 2.5" Combo	9
	2.5" SSD	9
I/O Panel	USB Ports	1 x USB 3.2 gen 2x2(20Gbps) Type C 4 x USB 3.2 gen 1 (3.0)
	Audio In / Out	1 x 3.5mm 4poles Audio Jack 1 x 3.5mm Mic Jack
	Other	1 x LED Controller A1 (ARGB Gen2) 1 x ARGB/PWM Hub
Pre-installed Fan(s)	Front	2x SickleFlow White PWM Performance Ed. ARGB 200mm
	Rear	2x SickleFlow White PWM ARGB 120mm
	Bottom	1x SickleFlow White PWM ARGB 120mm
Fan Support	Top	2 x 200mm, 3 x 140mm, 6 x 120mm (Remove 480mm bracket)
	Front	2 x 200mm
	Rear	2x 120mm
	Bottom	3 x 120 / 3 x 140mm
	Side mount	4 x 120 / 3 x 140mm
Radiator Support	Top	Up to 2 x 360mm / 1 x 420mm
	Front	N/A
	Rear	Up to 240mm
	Bottom	Up to 420/360mm
	Side mount	Up to 480/420mm
Clearances	CPU Cooler	166mm / 6.53 inch
	Power Supply	200mm / 7.87 inch
	Graphics Card	490mm / 19.29 inch
Cable Routing	Behind MB Tray	90~101mm
Dust Filters		Front, Bottom, Side
Power Supply Support		Bottom Mount, ATX
Warranty		2 Years
* For regular 30mm thick radiators, for thicker please reference compatibility sheet.		

PACKING INFORMATION

EAN code	4719512143995, 6928968319184(CN)
UPC code	884102116315
Net weight	19.9kg
Gross weight	24.5kg
Package dimension (L x W X H)	780 x 399 x 725 mm

Cont.	W/ Pallet	Carton/ Pallet	W/O Pallet
20'	77	7	123
40'	154	7	249
40 HQ	198	9	294